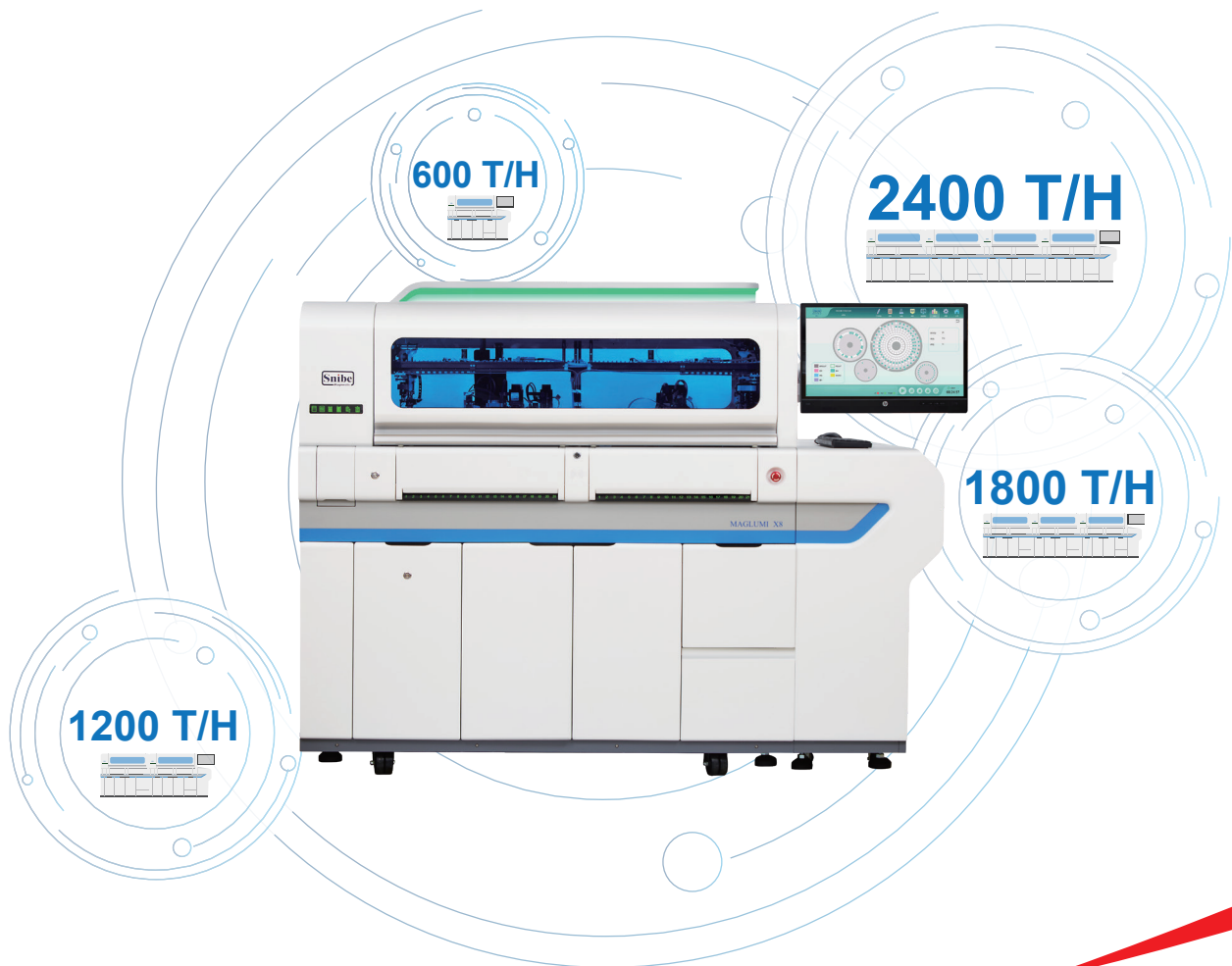


MAGLUMI[®] X8

Fully Automatic Chemiluminescence Immunoassay (CLIA) System



The Fastest CLIA Solution

www.snibe.com
sales@snibe.com



Outstanding Technologies

CLIA uses two important technologies, one is labelling technology which determines reaction mode, and the other is separation technology which determines the sensitivity, accuracy and precision of the reagents.

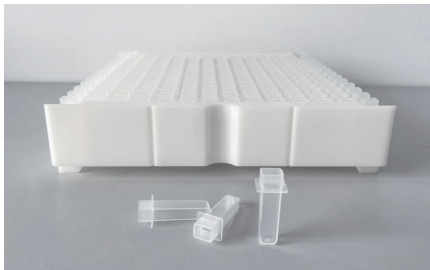
ABEI Labelling Technology

Two types of labelling technologies are commonly used. One is enzyme label and the other is non-enzyme small molecule label. Enzyme label reagents are not so stable and are easily affected by the change of storage conditions. **MAGLUMI**[®] system applies ABEI labels. ABEI is a non-enzyme small molecule with special molecular formula to enhance stability in acid and alkaline solutions. The chemical reaction process of ABEI with sodium hydroxide (NaOH) and hyperoxide (H_2O_2) finishes in 3 seconds.

Magnetic Microbeads Separation Technology

MAGLUMI[®] uses magnetic microbeads. As a separation technology, it has been widely used in the field of CLIA. Compared with traditional separation technologies, it has the following advantages,

- Shortening the reaction time by enlarging the reaction area of antigens and antibodies.
- Enhancing the sensitivity by better and faster capturing of antigens and antibodies.
- Reducing inter or intra-assay discrepancies significantly by mixing the reagents thoroughly in a liquid separation platform.



Reaction Module



Disposal TIP



Starter 1+2



Wash Concentrate



Tubing Cleaning Solution



Light Check

Advantages of MAGLUMI® X8



High throughput

- Throughput: up to 600 tests/hour(Single module)
- Up to 2400 tests/hour (Four modules combined)



High capacity

- Sample positions: 300
- Reagent Position: 42
- Up to 2800 walk-away tests



Excellent reliability

- Magnetic microbeads separation, fast and efficient
- Flash chemiluminescence label-ABEI
- Intelligent magnetic field design ensuring excellent separation
- Disposable tips to prevent carry-over



Advanced intelligence

- Capable to integrated several modules including Snibe Immunoassay, Biochemistry and ISE module
- Capable to link with Laboratory Automation System(TLA/LAS)
- User-friendly interface, easy operation
- Intelligent consumable loading technology
- Intelligent information monitoring system





Functional Modules



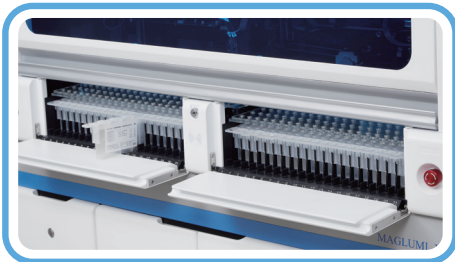
Sampling Loading

- Up to 300 sample positions
- Continuous loading, STAT function available
- Auto remeasuring function, auto dilution function
- Sample editing mode:
 - Lis connection, barcode recognition, auto named, manual editing



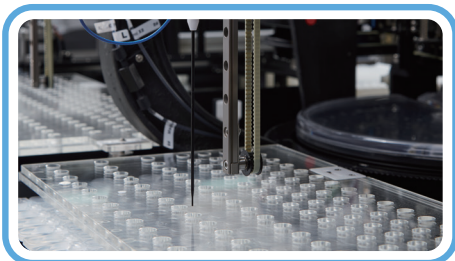
Sample Transport System/Sampling System

- 3 channels, High speed loading
- Specific channel for STAT samples
- Disposable tips
- One pipetting for multiple tests
- Clot detection
- Liquid level detection
- Bubble detection
- Collision detection



Reagent Area

- 42 reagent positions on board
- Continuous loading
- RFID technology
- 24-hour refrigerated
- Working Temp. 8°C-12°C, Storage Temp. 2°C-8°C



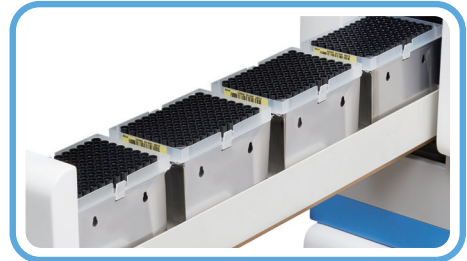
Reagent Needle

- Titanium needle for crushproof
- Teflon coated for carry-over prevention
- Dual-arm design to pipette different reagents simultaneously
- Liquid level detection, Collision detection



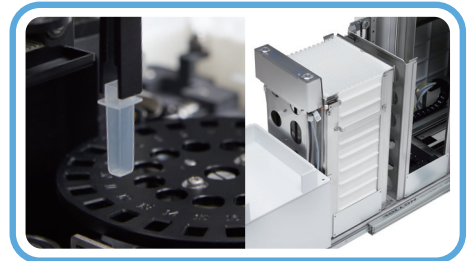
Tip Storage

- Up to 576 TIPs loaded one time (6 boxes)
- Intelligent loading technology, continuous loading, real-time reserve monitoring



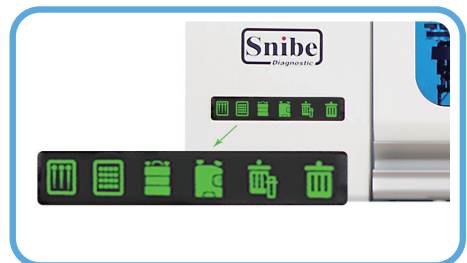
Cuvette Storage

- Single cuvettes design
- Up to 2912 cuvettes loaded one time (16 boxes)
- Intelligent loading technology, continuous loading, real-time reserve monitoring



Consumable Management

- Intuitive and concise design
- Intelligent reminding



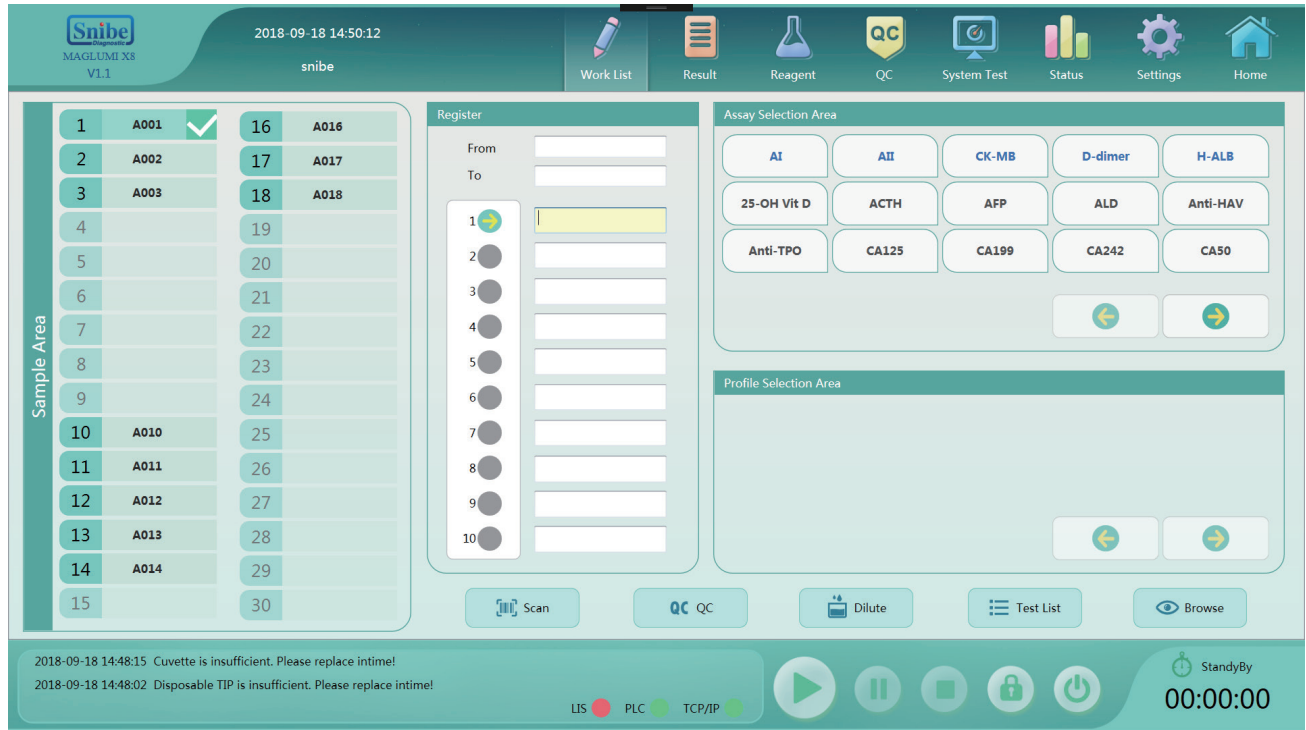
Software System

- Brand new user-friendly UI interface
- Supporting SnibelLinker remote diagnosis system
- Multilingual support
- Touch screen, easy operation
- Report system including editing, storage, query and printing





Operation Software



Comprehensive software

- User-friendly interface
- Real-time status monitoring for each test
- Monitoring reagent and consumable status
- Intelligent alarm function
- Multilingual support, more languages available by request



Maintenance guide

- Smart Maintenance with step by step guide, ensure performance reliability and reduce unnecessary service calls
- Daily, weekly and monthly maintenance guide for analyzer



Quality control

- Westgard rules and Levey-Jennings chart for both internal and external quality control



Test summary function

- Test summary including system test, calibration, QC, statistics of samples, valid tests and rerun tests
- Search and review test information conveniently



Pre or post defined dilution function

- Pre- and post- dilution available for the case of high concentration sample



Bidirectional LIS connection

- Bidirectional LIS connection by TCP/IP and ASTM

Broad CLIA Test Menu with 181 Assays



Thyroid

TSH (3rd Generation)
T4
T3
FT4
FT3
Tg (Thyroglobulin)
TGA (Anti-Tg)
Anti-TPO
TRAb
TMA
Rev T3
*T-Uptake

Hepatic Fibrosis

HA
PIIIP N-P
C IV
Laminin
Cholyglycine
*GP73

TORCH

Toxo IgG
Toxo IgM
Rubella IgG
Rubella IgM
CMV IgG
CMV IgM
HSV-1/2 IgG
HSV-1/2 IgM
HSV-1 IgG
HSV-2 IgG
*HSV-1 IgM
*HSV-2 IgM

EBV

EBV EA IgG
EBV EA IgA
EBV VCA IgG
EBV VCA IgM
EBV VCA IgA
EBV NA IgG
EBV NA IgA

Inflammation Monitoring

CRP (High Sensitive)
PCT (Procalcitonin)
IL-6 (Interleukin 6)
SAA (Serum Amyloid A)
*TNF- α

Kidney Function

β_2 -MG
Albumin
*NGAL

Fertility

FSH
LH
HCG/ β -HCG
PRL (Prolactin)
Estradiol
Testosterone
free Testosterone
DHEA-S
Progesterone
free Estrilol
17-OH Progesterone
AMH
SHBG
Androstenedione
*PIGF
*sFlt-1

Hypertension

Direct Renin
Aldosterone
Angiotensin I
Angiotensin II
Cortisol
ACTH

Autoimmune

Anti-CCP
Anti-dsDNA IgG
ANA Screen
ENA Screen
Anti-Sm IgG
Anti-Rib-P IgG
Anti-Scl-70 IgG
Anti-Centromeres IgG
Anti-Jo-1 IgG
Anti-M2-3E IgG
Anti-Histones IgG
Anti-nRNP/Sm IgG
Anti-SS-B IgG
Anti-SS-A IgG
TGA(Anti-Tg)
Anti-TPO
TRAb
TMA
ICA
IAA(Anti Insulin)
GAD 65
Anti-IA2
Anti-MPO
*ZnT8
*Anti-Cardioliipin IgG
*Anti-Cardioliipin IgM
* β 2-Glycoprotein I IgG
* β 2-Glycoprotein I IgM

Immunoglobulin

IgM
IgA
IgE
IgG

Tumor Markers

AFP
CEA
Total PSA
f-PSA
CA 125
CA 15-3
CA 19-9
PAP
CA 50
CYFRA 21-1
CA 242
CA 72-4
NSE
S-100
SCCA
TPA-snibe
ProGRP
HE4
HER-2
PIVKA-II

Infectious Disease

HBsAg
Anti-HBs
HBeAg
Anti-HBe
Anti-HBc
Anti-HCV
Syphilis
Anti-HAV
HAV IgM
HIV Ab/Ag Combi
Chagas
HTLV I+II
H.pylori IgG
H.pylori IgA
H.pylori IgM
2019-nCoV IgG
2019-nCoV IgM
SARS-CoV-2 S-RBD IgG
SARS-CoV-2 Neutralizing Antibody
SARS-CoV-2 Ag
*Anti-HBc IgM
*Chlamydia Pneumoniae IgG
*Chlamydia Pneumoniae IgM
*Mycoplasma Pneumoniae IgG
*Mycoplasma Pneumoniae IgM

Glyco Metabolism

C-Peptide
Insulin
GAD 65
Anti-IA2
ICA
IAA (Anti Insulin)
Proinsulin
*Glucagon
*ZnT8

Cardiac

CK-MB
Troponin I
Myoglobin
hs-cTnI
H-FABP
NT-proBNP
BNP
D-Dimer
Lp-PLA2
MPO
*HCY

Coagulation Marker

D-Dimer
*TAT
*TM
*PIC
*tPAIC

Metabolism

Pepsinogen I
Pepsinogen II
Gastrin-17
GH (hGH)
IGF-I
IGFBP-3

Prenatal Screening

AFP(Prenatal Screening)
Free β -HCG
PAPP-A
free Estriol

Anemia

Vitamin B12
Ferritin
Folate (FA)
EPO
*RBC Folate

Drug Monitoring

Digoxin
CSA (Cyclosporine A)
FK 506 (Tacrolimus)

Bone Metabolism

Calcitonin
Osteocalcin
25-OH Vitamin D
Intact PTH
 β -CrossLaps (β -CTx)
total P1NP

* Available soon

Technical Specifications

Reagent Features

- Flash chemiluminescence label-ABEI, with high sensitivity and long stability
- Superparamagnetic microbeads separation technology; fast and efficient

Main Features

- Throughput: up to 600 tests/hour (Single module)
- Time to first result: 15 minutes
- 24 hours ready to use
- Up to 2800 walk-away tests
- Modular Expanding Flexibility:
 - *Capable to integrated several modules including Snibe Immunoassay, Biochemistry and ISE module
 - *Capable to link with Laboratory Automation System (TLA/LAS)

Sample Loading

- Up to 300 sample positions
- Continuous loading, STAT available
- Auto remeasuring function
- Sample editing mode:
 - Lis connection, Barcode recognition, Auto named, Manual editing

Reagent Loading

- 42 reagent positions on board
- Continuous loading
- RFID technology
- 24-hour refrigerated
- Working Temp. 8°C-12°C, Storage Temp. 2°C-8°C

Reagent Needle

- Titanium needle for crushproof
- Teflon coated for carry-over prevention
- Dual-arm design to pipette different reagents simultaneously
- Liquid level detection, Collision detection
- Probe depth adjustment automatically

Reagent Integral

- Ready to use, no pretreatment required
- Calibrators and internal controls included
- RFID tag storing all info of reagent
- 2-point re-calibration
- Calibration stability: up to 4 weeks
- Storage temperature: 2°C-8°C

Sampling System

- Using disposable TIPS
- One pipetting for multiple tests
- Clot detection
- Liquid level detection
- Bubble detection
- Collision detection

Reaction Disk

- Incubating 252 cuvettes simultaneously
- Stable 37.0 ± 0.3°C incubation
- Non-contact mix technology

Tip Storage

- Up to 576 TIPS loaded one time (6 boxes)
- Intelligent loading technology, continuous loading, real-time reserve monitoring

Cuvette Storage

- Single cup design
- Up to 2912 cuvettes loaded one time (16 boxes)
- Intelligent loading technology, continuous loading, real-time reserve monitoring

Washer

- 4-step washing technology, high speed single channel design
- Intelligent magnetic field design ensuring excellent separation
- Non-contact magnetic microbeads suspension technology

Software System

- Bidirectional LIS connection by TCP/IP and COM Port
- Supporting SnibeLinker remote diagnosis system

Dimensions Weight

- Input: AC 100-240V,50/60Hz
- Dimensions and Weight:192*118*150 (cm), 670Kg

MAGLUMI® is a trademark of Snibe.

All other product names and trademarks are the property of their respective owners.



Shenzhen New Industries Biomedical Engineering Co., Ltd.
(SNIBE Co.,Ltd.)

No.23, Jinxiu East Road, Pingshan District, 518122 Shenzhen,
P.R. China

Tel: +86 755 26501514
Email: sales@snibe.com

Fax: +86 755 26654850
Web: www.snibe.com

Follow us on



